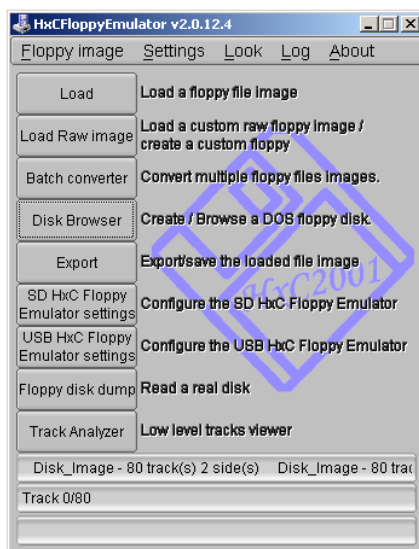


HxC Floppy Emulator Software

Step by Step Guide



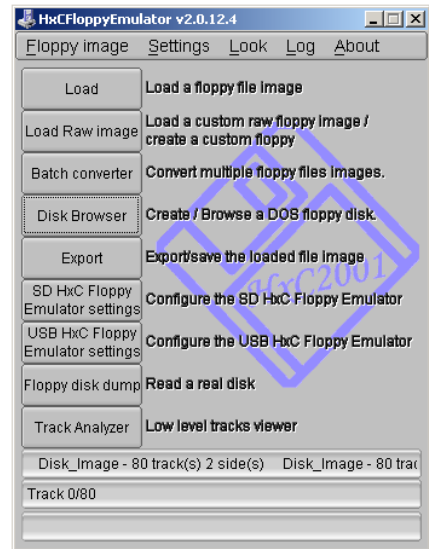
Summary:

1. General description	3
2. How to create a DOS disk image and add some files to this image ?	4
3. How to get files from a DOS disk image ?	6
4. How to convert a disk image for the SD HxC Floppy Emulator ?	8
5. How to convert a RAW disk image for the SD HxC Floppy Emulator ?	10
6. How to batch convert a large quantity of disk images ?	12
7. How to make a disk image from a floppy disk ?	14
8. Supported disk images	16
9. HxC Floppy Emulator Software User Guide Disclaimer	17

1. General description

The HxC Floppy Emulator software allows you to :

- **Load/convert a large diversity of disk image types.**
- **Batch convert a large quantity of disk images.**
- **Read your floppy disks and generate disk images.**
- **Generate empty floppy disk images.**
- **Add/Read/Remove files from a DOS floppy disk image.**
- **Do some low level track analysis.**



Since this tool is working at the floppy track level, **it support all standard and non-standard/custom floppy disk format/layout.**

This tool can be downloaded there :

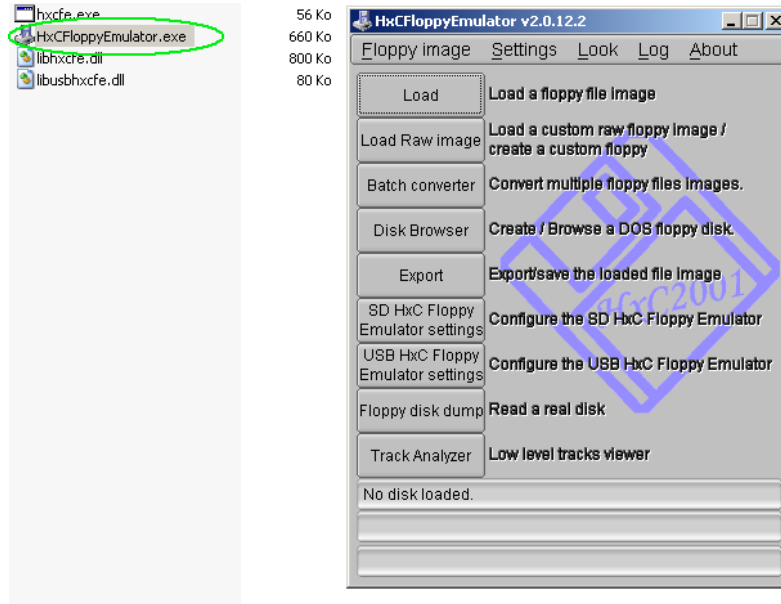
http://hxc2001.com/download/floppy_drive_emulator/HxCFloppyEmulator_soft.zip

This software is **available on Windows, MacOS X (x86) and Linux** machines.

This Step by Step guide intend to describe some basic tasks.

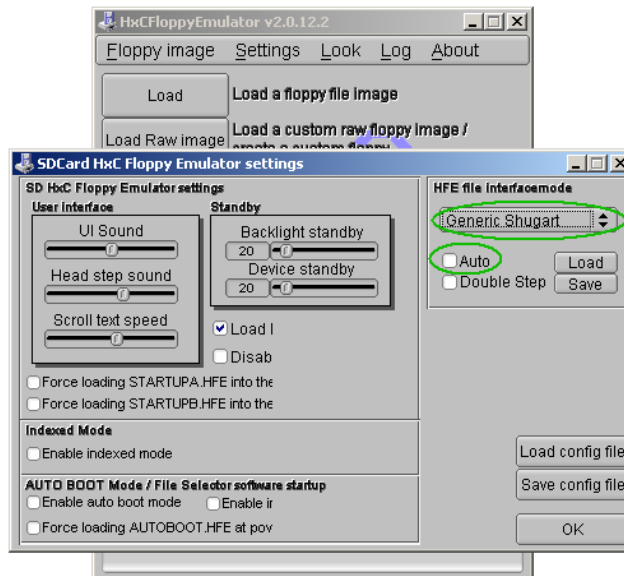
2. How to create a DOS disk image and add some files to this image ?

- Step 1 : Start the software



- Step 2 :(Optional) Change the default floppy interface mode

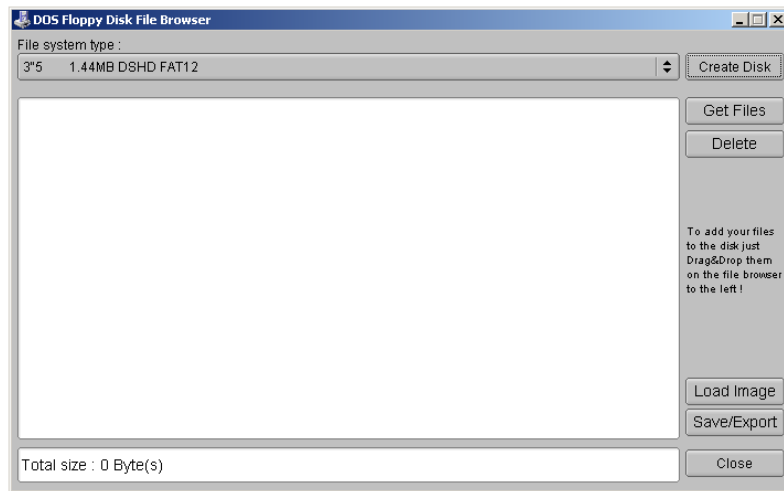
- Step 2.a : Click on “SD HxC Floppy Emulator settings”.
- Step 2.b : Uncheck “Auto” and choose the desired Interface mode.



- Step 2.c : Click on the OK button.

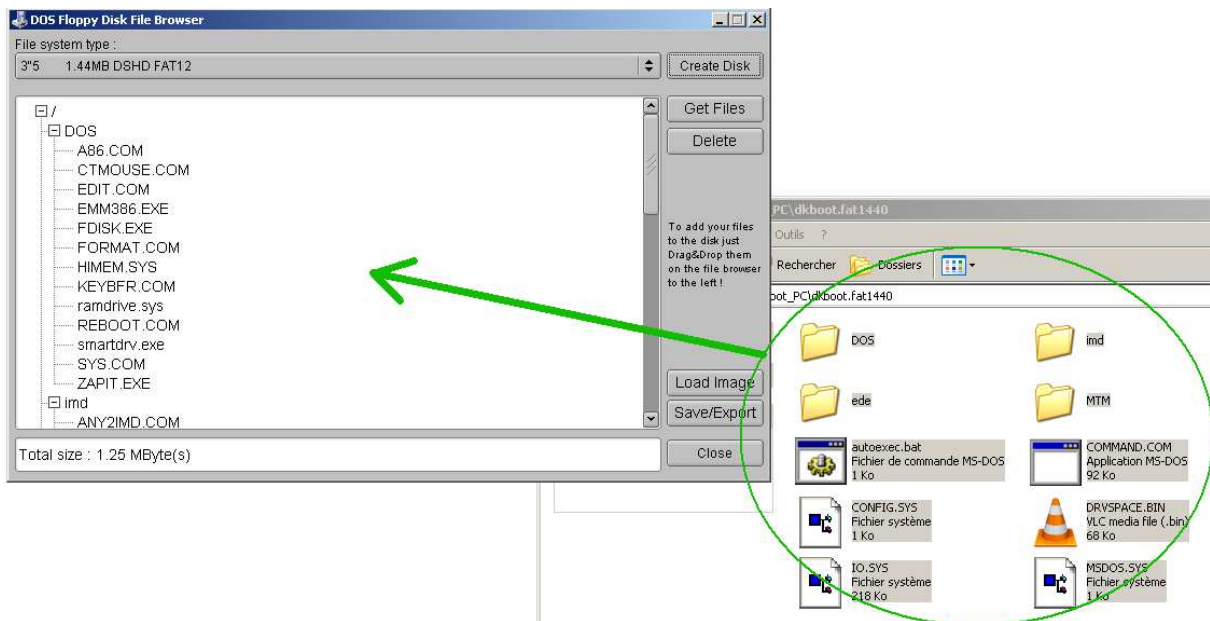
- Step 3 : Click on « Disk Browser »

- Step 4 : Choose the File system type and click on “Create Disk”



After this you can export the generated disk image or add some files to this image.

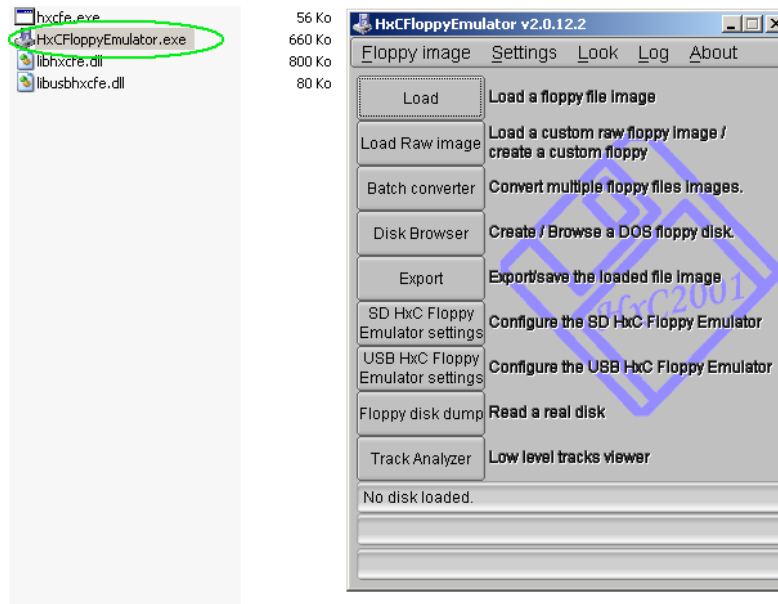
- Step 5 : To add some files to the disk image just drag & drop them to the window.



- Step 6 : Once finished, just click on “Save/Export” to save the disk image.

3. How to get files from a DOS disk image ?

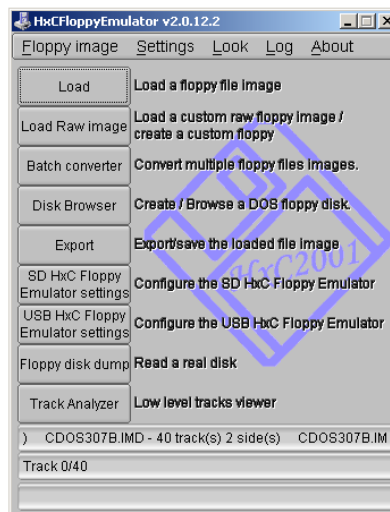
- Step 1 : Start the software



- Step 2 : Click on the button “Load”

- Step 3 : Choose your disk image

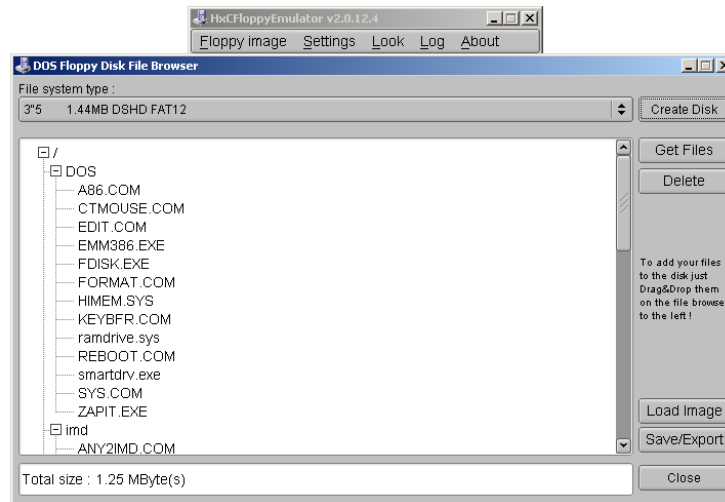
Once done the disk image is loaded into the software



Note : The disk image can also be loaded by a simple drag&drop on the main window !

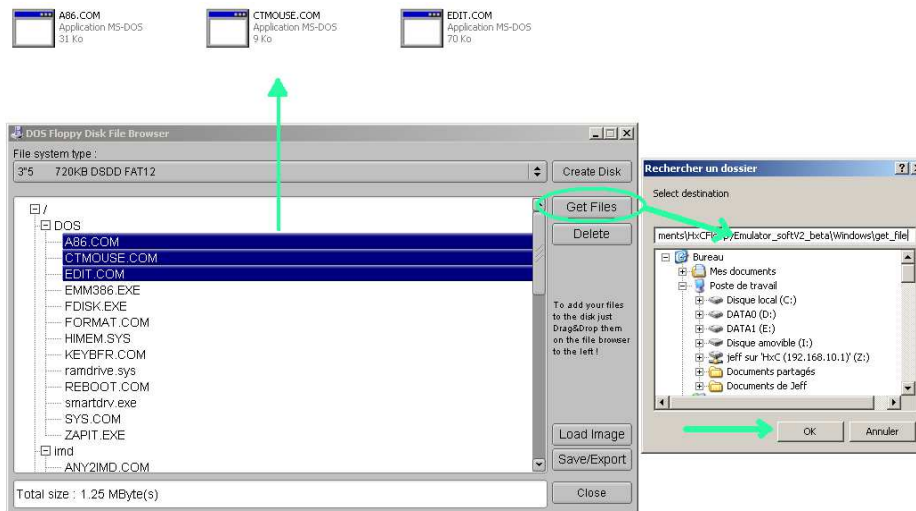
- Step 4 : Click on « Disk Browser »

You should be able to see the files & folder present in the image :



- Step 5 : Select the file(s)/folder(s) to get and press “Get Files”

- Step 6 : Choose a place on your computer to save the select file(s)/folder(s).



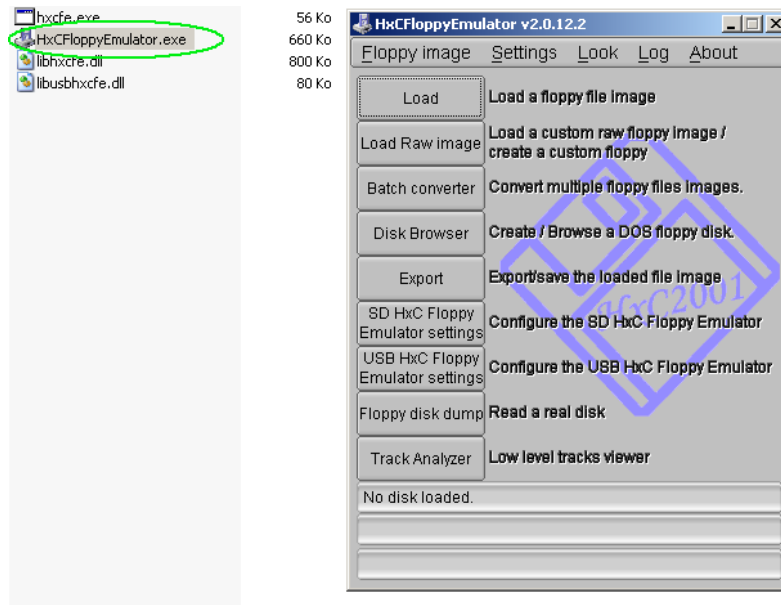
Once done the files are present into the target directory.

Note : If no file/folder is selected, the whole content of the floppy disk image will be extracted.

Note : A simplified version of this DOS image browser is available here :
http://hxc2001.com/download/floppy_drive_emulator/HxCFE_DosDiskBrowser.zip
This software can be copied to the root of the SD Card and allows you a fast & easy access to your files.

4. How to convert a disk image for the SD HxC Floppy Emulator ?

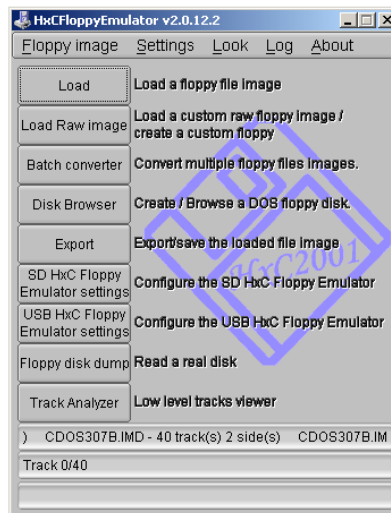
- Step 1 : Start the software



- Step 2 : Click on the button "Load"

- Step 3 : Choose your disk image

Once done the disk image is loaded into the software

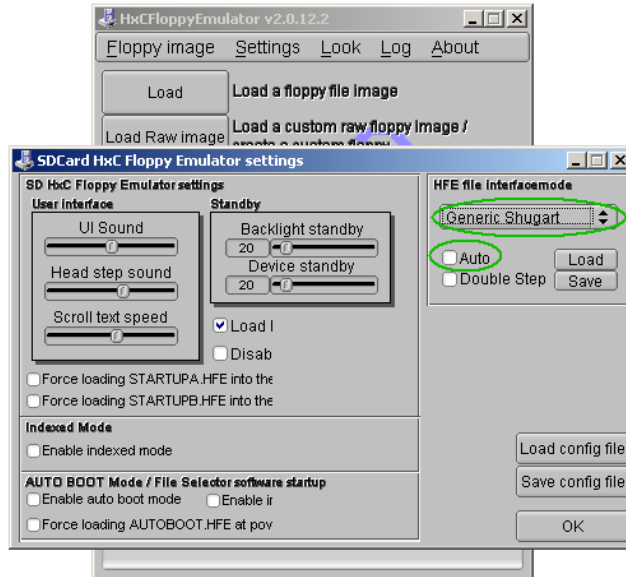


Note:

The disk image can also be loaded by a simple drag & drop on the main window !

- Step 4 : (Optional) Change the default floppy interface mode

- Step 4.a : Click on “SD HxC Floppy Emulator settings.
- Step 4.b : Uncheck “Auto” and Choose the desired Interface mode.

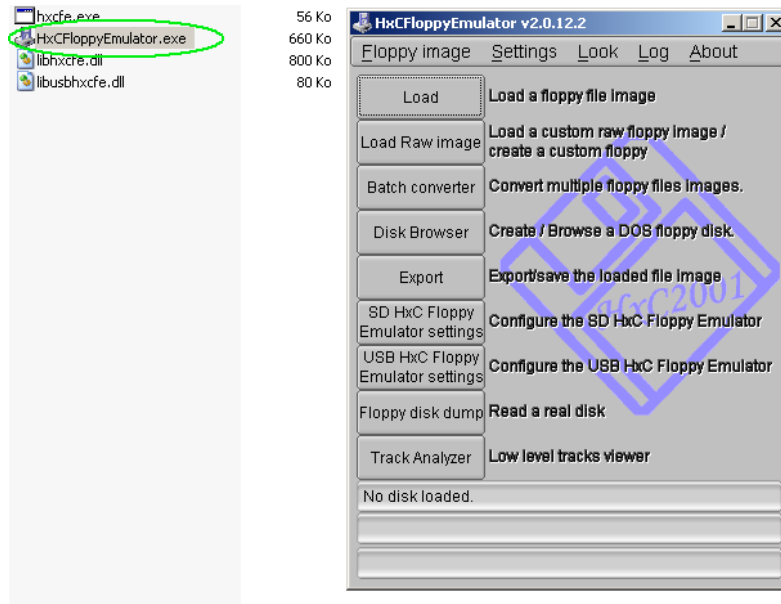


- Step 4.c : Click on the OK button.

- Step 5 : Click on “Export”**- Step 6 : Save the file on the SD Card.**

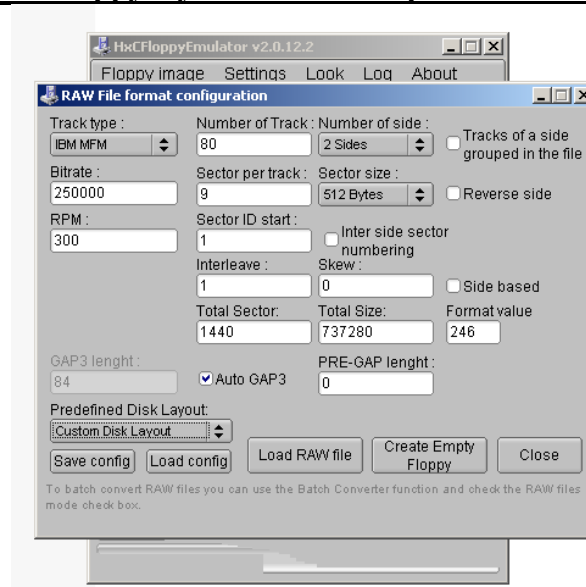
5. How to convert a RAW disk image for the SD HxC Floppy Emulator ?

- Step 1 : Start the software



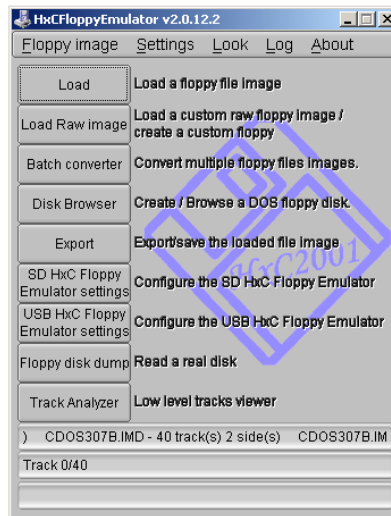
- Step 2 : Click on the button “Load Raw image”

- Step 3 : Set the desired floppy layout or choose a predefined one



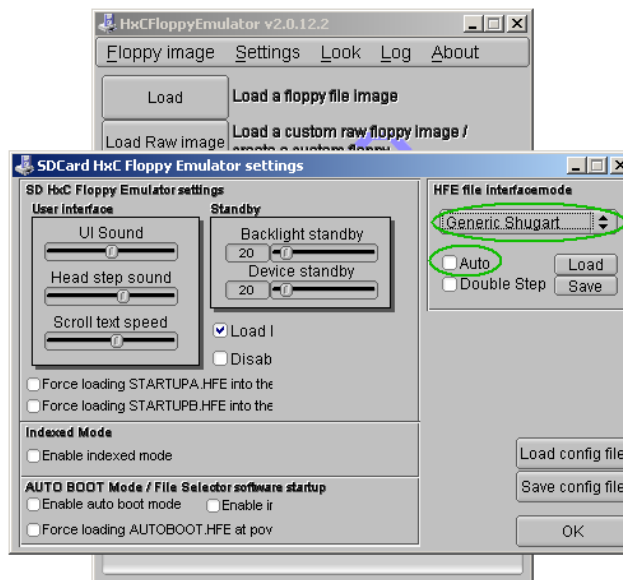
- Step 4 : Click on “Load RAW file” and choose the disk image

Once done the disk image is loaded into the software



- Step 5 : (Optional) Change the default floppy interface mode

- Step 5.a : Click on “SD HxC Floppy Emulator settings.
- Step 5.b : Uncheck “Auto” and choose the desired Interface mode.



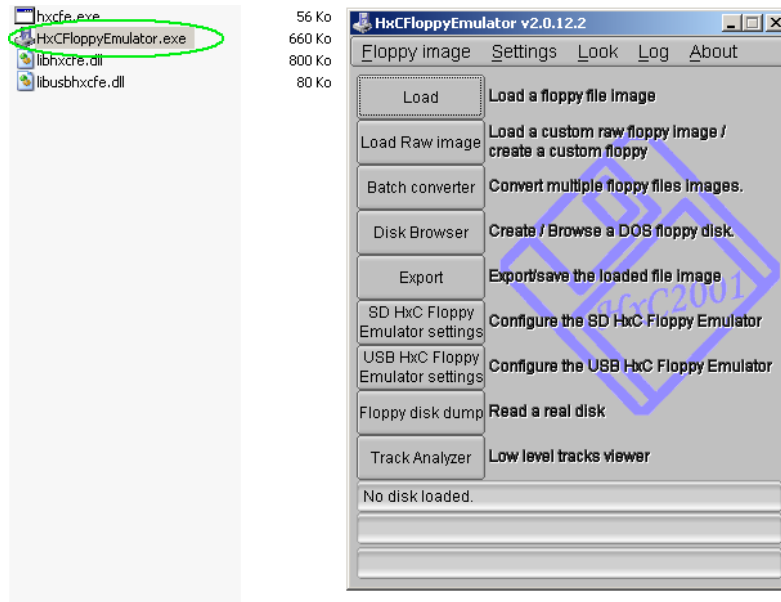
- Step 5.c : Click on the OK button.

- Step 6 : Click on “Export”

- Step 7 : Save the file on the SD Card.

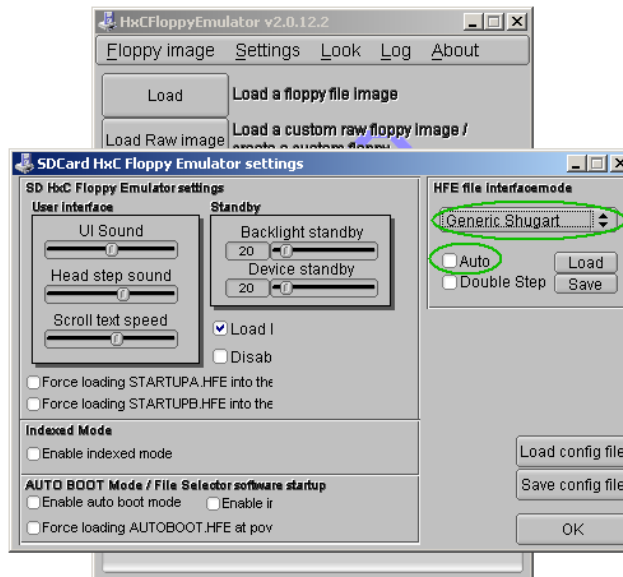
6. How to batch convert a large quantity of disk images ?

- Step 1 : Start the software



- Step 2 : (Optional) Change the default floppy interface mode

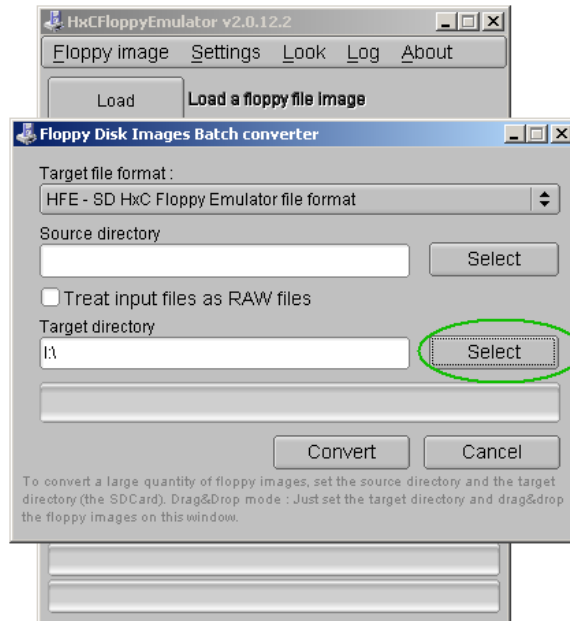
- Step 2.a : Click on “SD HxC Floppy Emulator settings”.
- Step 2.b : Uncheck “Auto” and Choose the desired Interface mode.



- Step 2.c : Click on the OK button.

- Step 3 : Click on the button “Batch converter”

- Step 4 : Select the target directory (generally the SDCard)



- Step 5.a : Select the source directory and press “Convert”

OR

- Step 5.b : Drag and Drop the files images to convert.

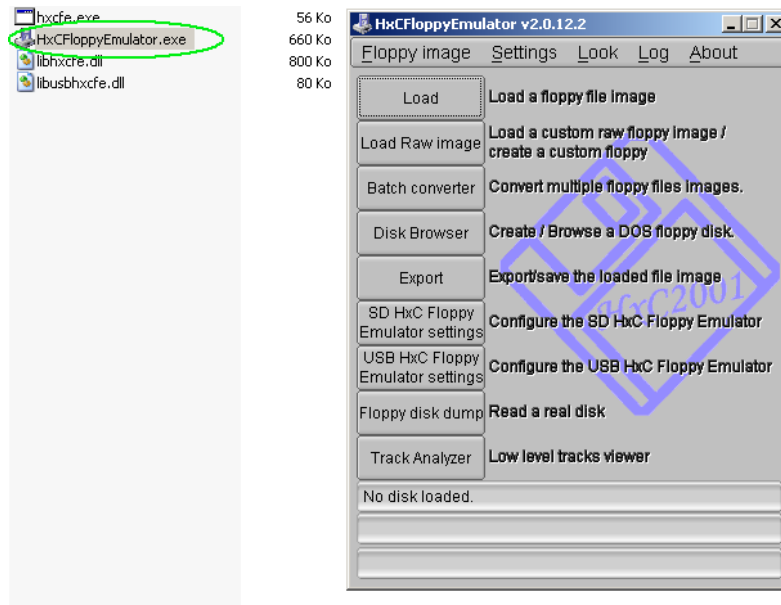
Once done the converted disk images are into the target folder.

7. How to make a disk image from a floppy disk ?

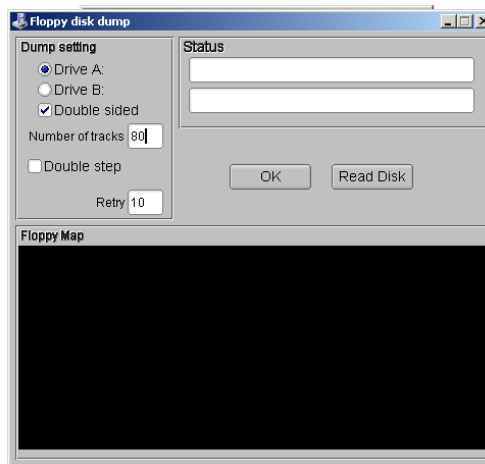
- Step 1 : (If not already done) Install the fdrawcmd driver on a PC with an internal floppy disk drive:

<http://simonowen.com/fdrawcmd/#download>

- Step 2 : Start the software

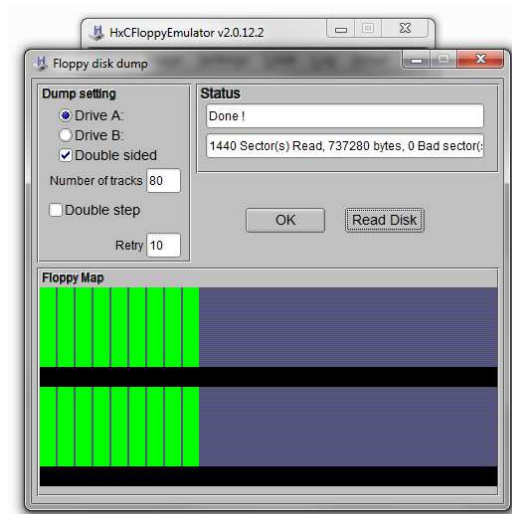


- Step 3 : Click on the button “Floppy disk dump”



- Step 4 : Insert the floppy disk and press “Read Disk”

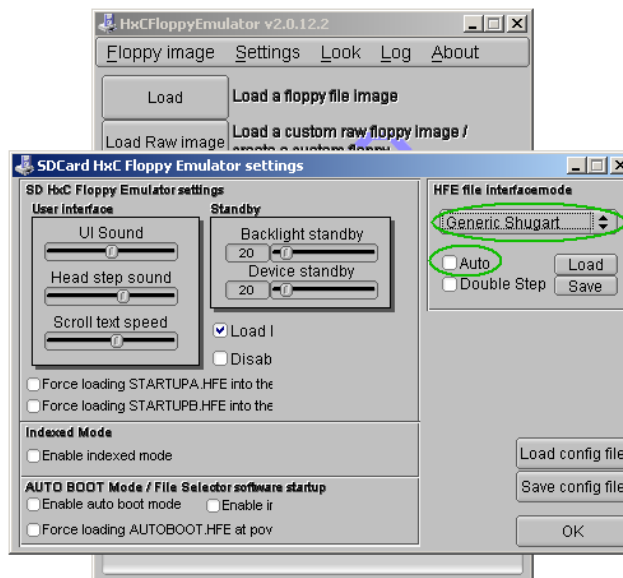
Once done the disk image is loaded into the software.



- Step 5 : Once done press “Ok”

- Step 6 :(Optional) Change the default floppy interface mode

- Step 6.a : Click on “SD HxC Floppy Emulator settings”.
- Step 6.b : Uncheck “Auto” and choose the desired Interface mode.



- Step 6.c : Click on the OK button.

- Step 7 : Click on “Export”

- Step 8 : Save the file on the SD Card.

8. Supported disk images

ACORN ADF Loader	*.adf	ORIC DSK Loader	*.dsk
AMIGA ADF Loader	*.adf	PROPHET 2000 Loader	*.img
AMIGA ADZ Loader	*.adz	RAW Sector loader	*.img
AMIGA DMS Loader	*.dms	Roland W30 file Loader	*.w30
AMIGA EXTENDED ADF Loader	*.adf	SAM COUPE MGT Loader	*.mgt
AMIGA FS Loader	*.amigados	SAM COUPE SAD Loader	*.sad
AMIGA OLD EXTENDED ADF Loader	*.adf	SD Card HxCFE EXTENDED HFE	*.hfe
Amstrad CPC (E)DSK Loader	*.dsk	SD Card HxCFE HFE file Loader	*.hfe
Apple II NIB Loader	*.nib	Speccy DOS SDD File Loader	*.sdd
APRIDISK Loader	*.dsk	SPS IPF Loader (caps lib needed)	*.ipf
ATARI ST DIM Loader	*.dim	Super famicom SMC Loader	*.smc
ATARI ST MSA Loader	*.msa	Sega System 24 loader	*.s24
ATARI ST ST Loader	*.st	TELEDISK TD0 Loader	*.td0
ATARI ST STT Loader	*.stt	THOMSON FD Loader	*.fd
Atari ST STX/Pasti Loader	*.stx	THOMSON TO8D SAP Loader	*.sap
BBC ADL floppy image loader	*.adl	TI99 4A PC99 Loader	*.pc99
BBC SSD & DSD floppy image loader	*.dsd	TI99 4A V9T9 Loader	*.v9t9
C64 D81 Loader	*.d81	TRS80 DMK Loader	*.dmk
CAMPUTERSLYNX Loader	*.ldf	TRS80 JV1 Loader	*.jv1
Casio FZF file Loader	*.fzf	TRS80 JV3 Loader	*.jv3
COPYQM IMG Loader	*.dsk	TRS80 JVC Loader	*.jvc
DRAGON32 & 64 VDK Loader	*.vdk	VEGAS6809 image Loader	*.veg
EMAX EM1 & EM2 Loader	*.em1	VTR IMG Loader	*.vtr
E-mu Emulator I dsk Loader	*.emuifd	X68000 HDM file Loader	*.hdm
E-mu Emulator II *.eii Loader	*.eii	Zx Spectrum FDI Loader	*.fdi
E-mu Emulator II / SP1200 dsk Loader	*.emuiifd	Zx Spectrum SCL Loader	*.scl
ENSONIQ EDE/A/S/T/V Loader	*.ed?	Zx Spectrum TRD Loader	*.trd
ENSONIQ GKH Loader	*.gkh		
Ensoniq mirage EDM Loader	*.edm		
FAT12/MS DOS Loader	*.fat		
HxC AFI file loader	*.afi		
HXC MFM IMG Loader	*.mfm		
IBM PC IMG Loader	*.img		
IBM PC IMZ Loader	*.imz		
ImageDisk IMD file Loader	*.imd		
KryoFlux Stream Loader	*.raw		
MSX DSK Loader	*.dsk		
NEC D88 Loader	*.d88		
Oberheim DPX Loader	*.dpx		

9. HxC Floppy Emulator Software User Guide Disclaimer

The information in this document is subject to change without notice and does not represent a commitment on the part of HxC2001. No part of this manual may be reproduced or transmitted in any form for any purpose other than the purchaser's personal use, without the express written permission of HxC2001. HxC2001 has made every effort to provide complete details about the product in this manual, but makes no warranty of any kind with regard to this material, including, but not limited to, the implied warranties of merchantability or fitness for a particular purpose. In no event shall HxC2001 be liable for any incidental, special, indirect, or consequential damages whatsoever included but not limited to lost profits arising out of errors or omissions in this manual or the information contained herein. All trademarks mentioned in this document, belong to their respective owners.

Contact / Project page :

The Software and Firmware are regularly updated.

To get the latest version of the software and firmware please visit the project website:

<http://hxc2001.com>

To report problem or issue please go to the project support forum :

<http://www.torlus.com/floppy/forum>

or contact us by email:



Email :

hxc2001@hxc2001.com

©2006-2013 Jean-François DEL NERO / HxC2001 All rights reserved.

Jean-François DEL NERO

11 Rue Frédéric Magisson

75015 PARIS

France

SIRET N° 524 662 301 00026

VAT N° FR22524662301

Website : <http://hxc2001.com/>

© 2006-2013 Jean-François DEL NERO

© 2006-2013 HxC2001.

All rights reserved.

HxC Floppy Emulator Software User Guide issued May 2013.

HxC Floppy Emulator Project © 2006 – 2013 HxC2001

<http://hxc2001.com/>

Page 17 of 17